

Opportunities for States to Leverage Farm Bill and Grants to Help Meet State Watershed Implementation Plans

Dana York

Director

Watershed and Landscape Programs Division,
USDA/NRCS



Watershed Implementation Plan's will require two major things to increase implementation:

- Financial Assistance (FA)
- Technical Assistance(TA)

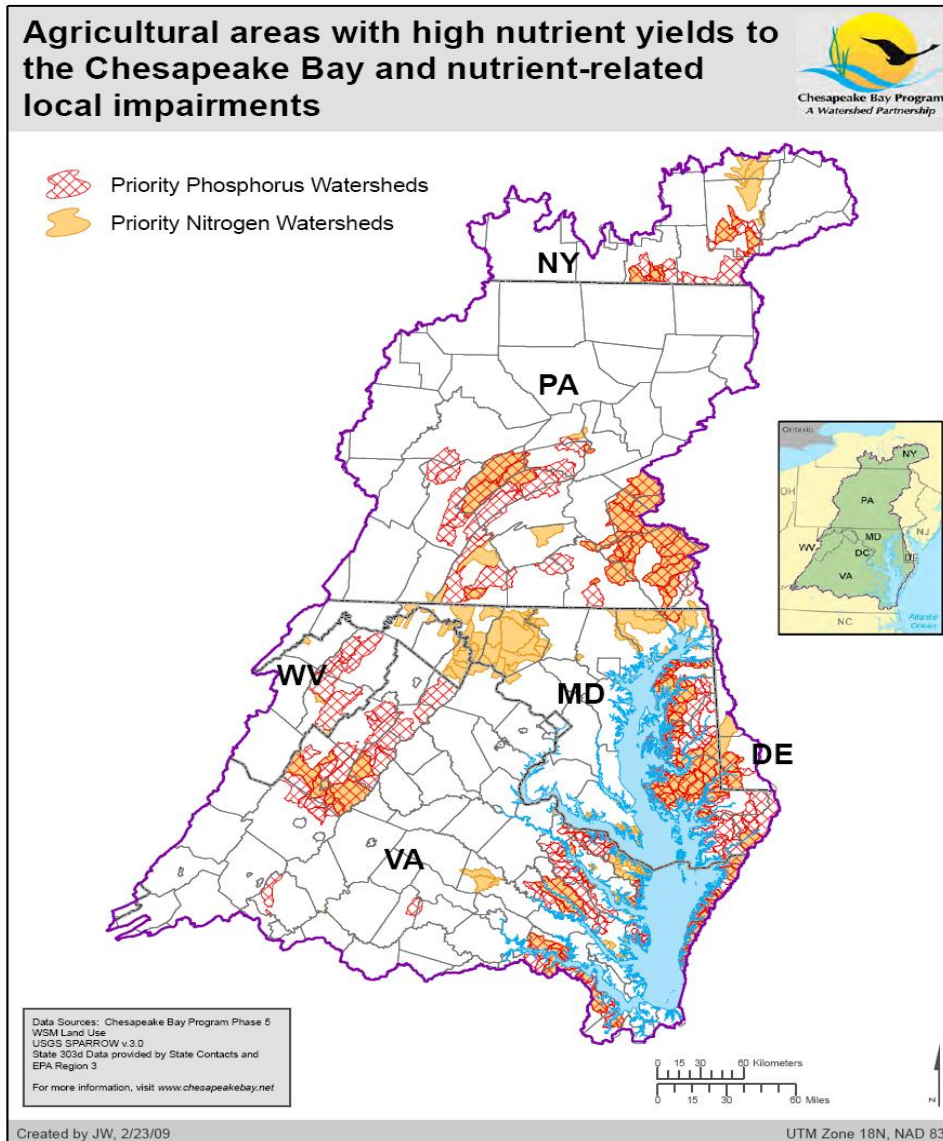


FY2011 will be the 3rd year of the CBWI. If funded, it will be at it's highest level (\$72M) of the four year total \$188M.

To look at future opportunities, lets look at what has happen in CBWI in the past two years.

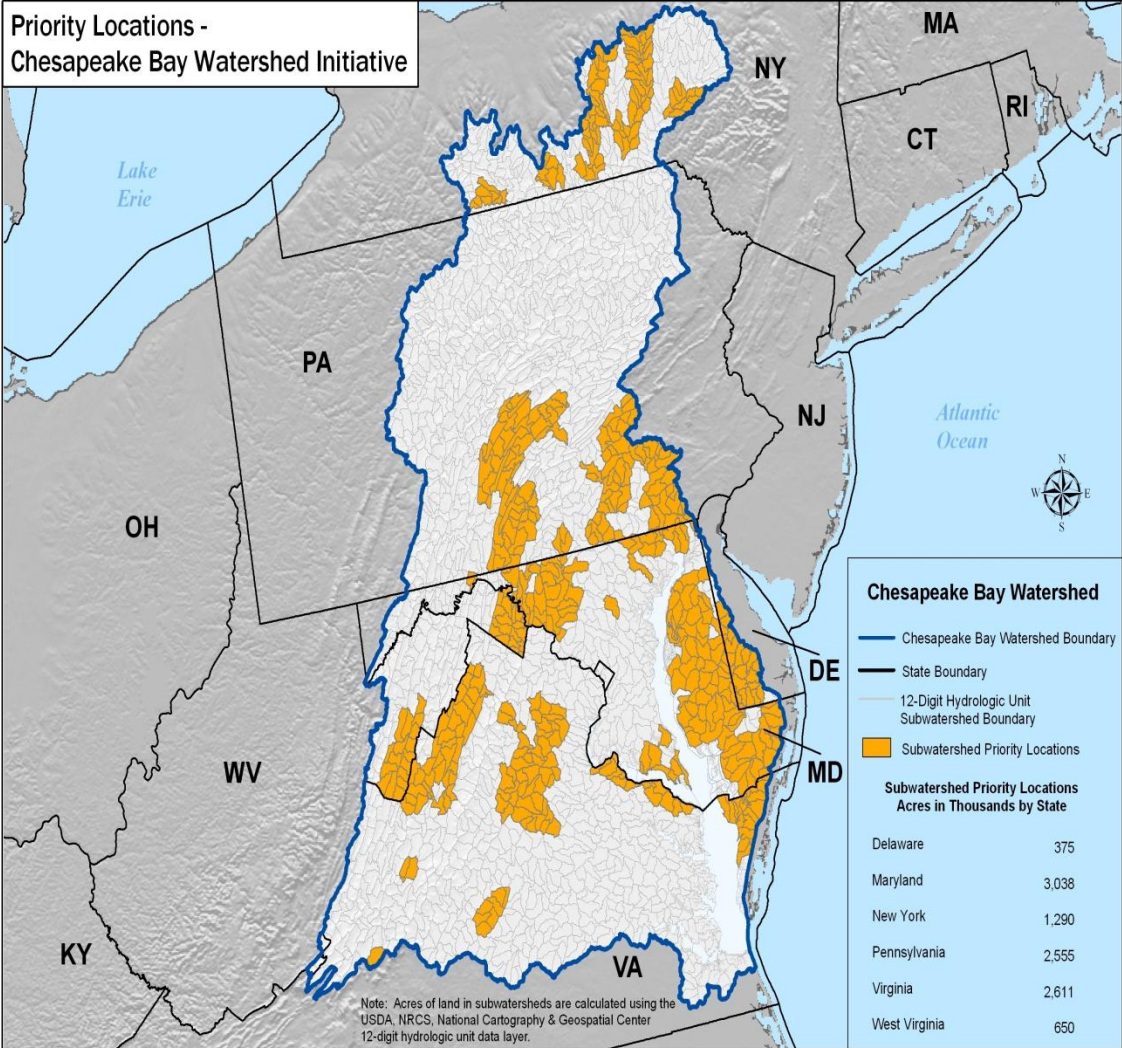


COAST Data – A Starting Point



This map was developed from EPA and USGS COAST data and merged both N and P agriculture priority watersheds. This map was used by EPA CBPO to advise NRCS on where to focus Farm Bill funding for greatest benefit to the Bay.

**Priority Locations -
Chesapeake Bay Watershed Initiative**



FY09 CBWI Priority Watersheds

Through the priority setting process, approximately 500 small watersheds were identified covering 10.5 million acres or nearly 25% of the Chesapeake Bay Watershed.



U.S. Department of Agriculture
Natural Resources Conservation Service
Resources Inventory and Assessment Division
Washington, D.C. February 2009

Map ID: 10434

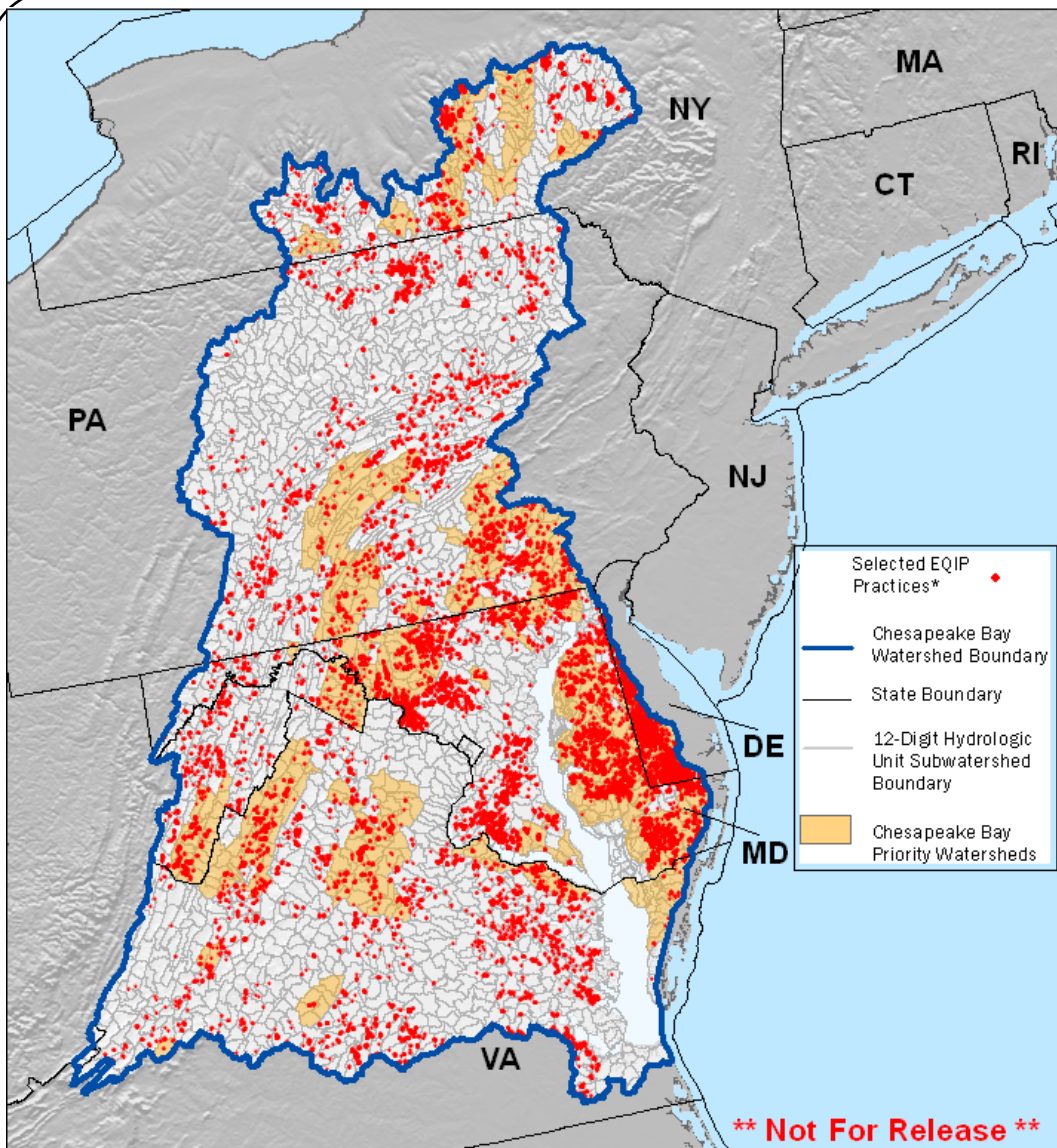
Source: USDA, NRCS, Chesapeake Bay Program Data

NRCS- CBWI-Priority conservation practices identified by Bay States (2009)

Pennsylvania	New York	Virginia
<ul style="list-style-type: none"> Residue Management Cover Crops Grassed Waterways Terraces Diversions Vegetative Cover Nutrient Management Precision Application Techniques Feed Management Stream Bank Fencing Riparian Buffers 	<ul style="list-style-type: none"> Grassed Waterways Diversions Prescribed Grazing Pasture and Hayland Planting Nutrient Management Cover Crops Stream Bank Fencing Riparian Buffers 	<ul style="list-style-type: none"> Conservation Crop Rotation Residue and Tillage Management Cover Crop Riparian Herbaceous Cover Riparian Forested Buffer Nutrient Management Pest Management Fence Conservation Cover Pasture and Hayland Planting Tree Planting
Maryland	Delaware	West Virginia
<ul style="list-style-type: none"> Residue Management Grassed Waterways Vegetative Covers - filter strips, field borders Nutrient Management Precision Application Techniques Waste Storage Facilities Structures for Water Control Stream Bank Fencing Riparian Buffers 	<ul style="list-style-type: none"> Nutrient Management Cover Crops Irrigation Water Management Heavy Use Area Protection 	<ul style="list-style-type: none"> Nutrient Management Pest Management Residue Management Cover Crop Shoreline Protection Fence Heavy Use Area Protection Waste Storage Facility

CHESAPEAKE BAY WATERSHED INITIATIVE-Prior Year Activity

- EQIP practices applied and reported in the Chesapeake Bay Watershed FY2004 to May 2009.
- 24 priority practices as identified by each state for 2009 CBWI are represented.
- 45,602 Practices Installed. 40-51% are in the priority watersheds.



There are a total of 45,602 practices represented in this map; 23,278 of these, or 51%, are in priority watersheds. The practices cover 651,164 acres -- 54% in priority areas; 4,409,461 feet -- 36% in priority areas; 799 facilities or structures -- 53% in priority areas; and 302 animal units -- 93% in priority areas.

*This map includes the following practices: Conservation Cover, Conservation Crop Rotation, Cover Crop, Cover Crop Shoreline Protection, Diversions, Feed Mgmt., Fencing, Filter Strips, Grassed Waterways, Heavy Use Area Protection, Irrigation Water Mgmt., Lined Waterway or Outlet, Nutrient Mgmt., Pasture and Hayland Planting, Pest Mgmt., Prescribed Grazing, Residue & Tillage Mgmt., Riparian Buffers, Riparian Herbaceous Cover, Structures for Water Control, Terraces, Tree Planting, and Waste Storage Facilities.



U.S. Department of Agriculture
Natural Resources Conservation Service
Resources Inventory and Assessment Division
Washington, D.C. June 2009

Map ID: 10677

Source: USDA, NRCS,
National Conservation Planning Database,
Applied and Reported Practices, June 2009



Maps not available for release

FY09 CBWI and EQIP Contracts

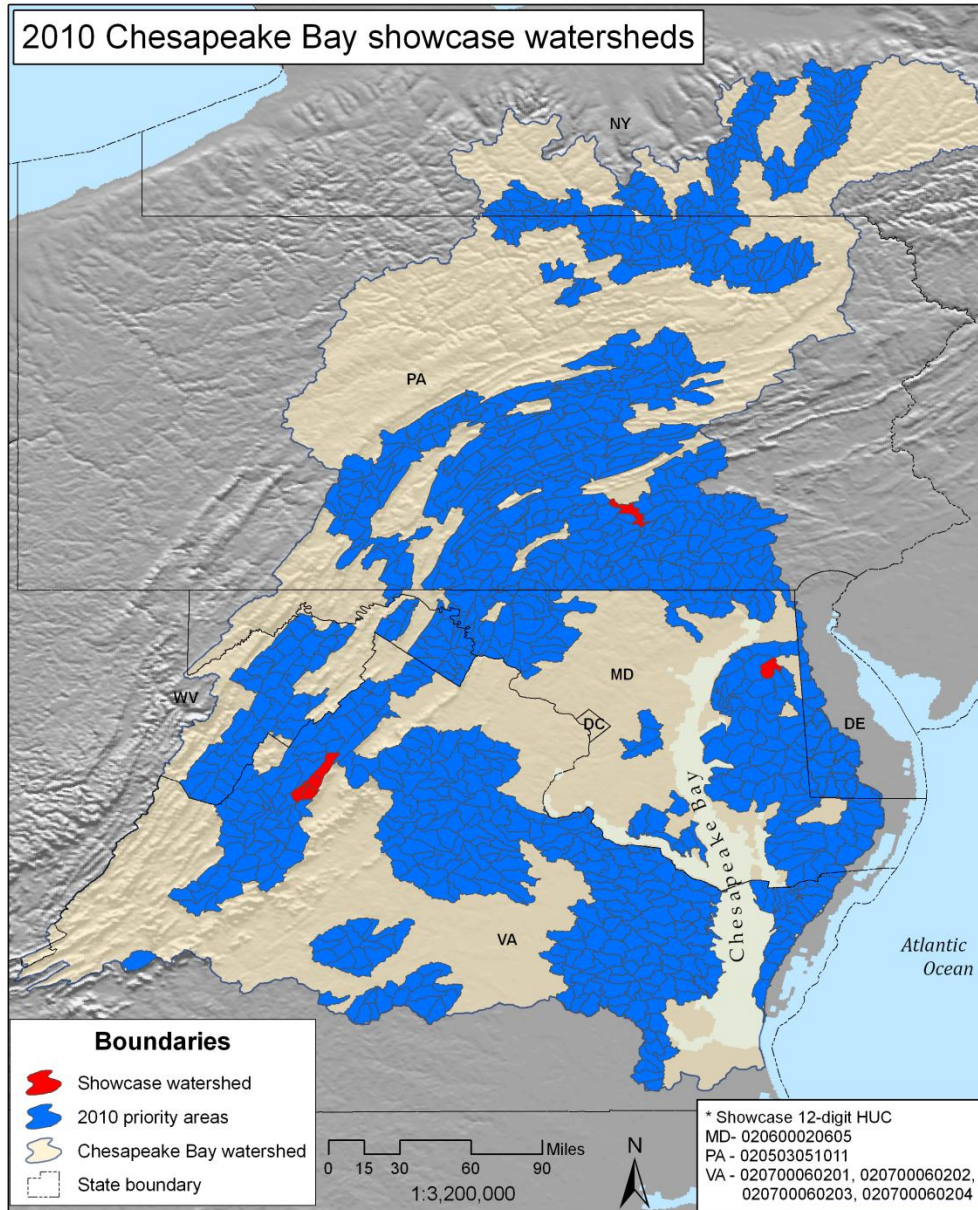
In 2009 individuals who applied for CBWI funds received higher ranking if their farms were in the priority watersheds.

The yellow triangles represent CBWI contracts and the blue dots represent EQIP contracts. In each contract there are numerous practices.

For example in Delaware there were 12 CBWI contracts that represent 159 practices.

There was an increase in priority practice application in priority watersheds to 75.4%. EQIP increased to 66.5% of priority practices being in priority watersheds.

2010 Chesapeake Bay showcase watersheds



Map data sources: watersheds based on 12-digit HUCs USGS, NRCS areas submitted by states

December 2, 2009

CBWI FY2010

- In FY 2010 due to the increase in funding, the priority watersheds were increased to cover approximately 50% of the watershed.
- Leadership made the decision that 100% of CBWI funds would be used in the priority watersheds.
- Priority Practices were increased to include more structural practices.
- Demonstration Watersheds were also chosen so that increased activity could be modeled by all partners in planning, application, grant selection and in monitoring strategies.

FY 2010 Chesapeake Bay Watershed Initiative Contracts

As of July 13, 2010

876 new CBWI contracts

>97% of new contracts in
priority watersheds

100% of new contracts in or
adjacent to priority
watersheds

On 10/1/10 we had 953
CBWI contracts.

(Final Figures for the entire FY
will be available this fall.)



Maps not available for release

FY 2010 Chesapeake Bay
Watershed Initiative
Obligations by Watershed

As of July 13, 2010

Over \$31 million in direct
financial assistance
obligated to land owners in
New York, Pennsylvania,
Maryland, Delaware,
Virginia, and West Virginia

(Figures for the entire FY will
be available this fall.)

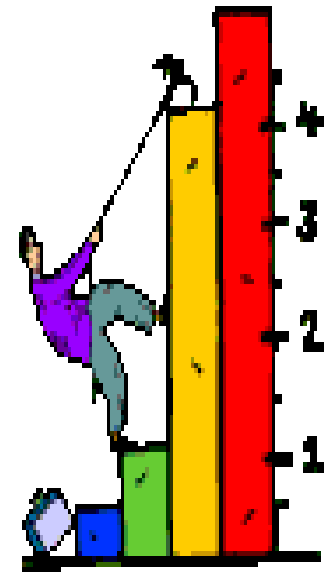


Maps not available for release

Top 16 Practices Planned in Priority Watersheds as of 7/13/10*

Practices	1 st time contracted on a land unit
• Nutrient Management	2831
• Cover Crop	2408
• Pest Management	604
• Residue and Tillage Management, No-Till/Strip Till/Direct Seed	475
• Fence	438
• Prescribed Grazing	436
• Conservation Crop Rotation	381
• Waste Utilization	355
• Waste Storage Facility	289
• Pipeline	287
• Heavy Use Area Protection	272
• Pasture and Hayland Planting	235
• Underground Outlet	140
• Waste Storage Facility	133
• Grassed Waterway	115
• Roof Runoff Structure	106

* Total of



Increasing Opportunities for Conservation Implementation will require the following:

- I. Verify Baseline-what/when/where
- II. Determine and Evaluate Financial and Technical Assistance Needs and Current Abilities of Partnership
- III. Targeted Partnership Efforts-TA/FA/Grants
- IV. Increase Landowner Commitment-Communication
- V. Gain Increased Industry Commitment
- VI. Increase FA and TA from other Sources
- VII. Develop new Technology Solutions
- VIII. Determine Most Effective Activities that will Achieve required Environmental Outcomes
- IX. Adjust all of the above- Adaptive Management



Questions

Dana York
Director

Watershed and Landscape Programs
Division, USDA/NRCS

